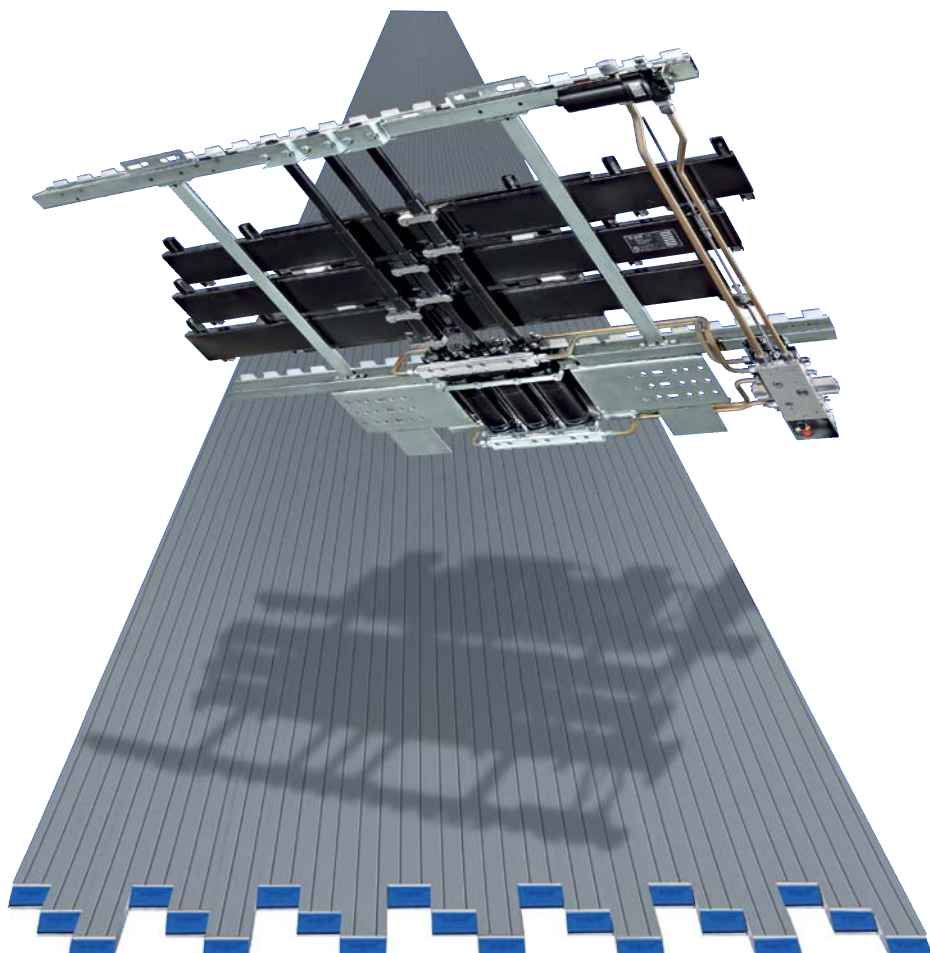
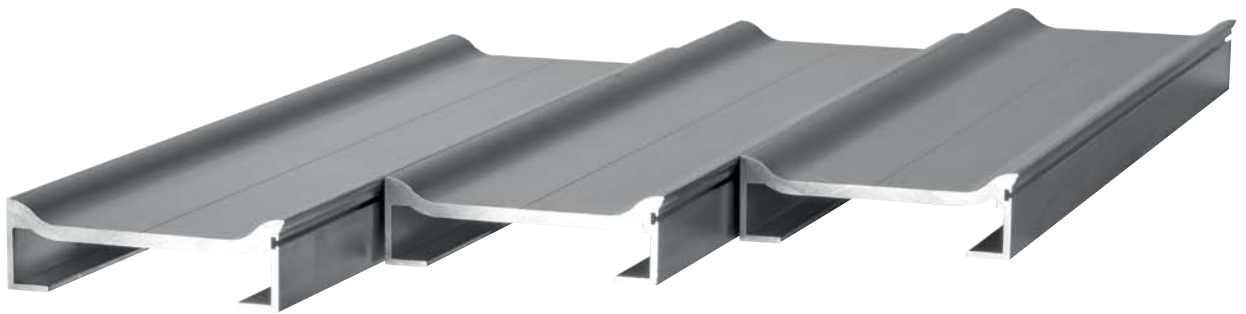




Subject: aluminium floor profile
Type : 8/20-HD (Heavy Duty)



8/20-HD “Heavy Duty” alu. floor profile

The unique 8/20 mm. HD “Heavy Duty” floor profile is especially developed for the waste industry, but has proved itself in praxis to be very suitable for the transport of almost all sorts of bulk product.

Because of the special design and the round shapes the HD floor profile is almost leakproof and is therefore the floor solution for the transport of all sorts of waste as well as glass, sand and pebbles. Even metal can be transported with it. The special design makes that the product is constantly pushed away from the seams in between the floor profiles; it looks, so to speak, that the product is being forced to the middle of the floor profile instead to the seams. Because of this the product does not come into contact with the high quality seal and this results also in an almost leak free floor.

Summarising you have the following advantage with the HD floor:







- Thicker and more stable profile with lower own weight;
- Efficient and clean unloading;
- Less wear;
- Suitable for abrasive materials;
- Low cost of ownership;
- High impact resistance;
- Larger moving surface;
- No wear to the trailer construction;
- Easy mounting;
- Less leakage.



APPLICATIONS

Aluminium 8/20 mm. HD "Heavy Duty" profile.

This profile is a so called dedicated profile. This means this is a profile that has been especially designed for the transport of special (mostly extreme) products. Because of the two protruding round merlons this profile has a very high impact resistance and the special round shape makes it easy to clean. Moist and dusty parts flow back into the so called barrel shape, so moist, mud and dust can simply be drained to the outside and almost no leakage through the floor occurs. This also protects the seal. Because of the low weight a perfect pay load ratio remains. The profile is less suitable for the transport of pallets and packaged goods.

Multi employable	Leak proof	Clean ability	Pallet transport	Drive over with a fork lift truck	Impact resistance
					

The 8/20 mm. HD profile is suitable for the transport of:

- bulk materials
- wood chippings
- sawdust
- bark
- logs of wood
- potting soil
- peat
- clay
- bleaching earth
- straw
- straw bales
- maize
- grain
- potatoes
- carrots
- tapioca
- milk powder
- coffee beans
- soybeans
- alfalfa
- sugar beet and pulp
- poultry feed
- manure
- fertilizer
- salt
- chalk
- coal
- used paper
- rolls of paper
- aluminium scrap
- domestic waste
- cargo (bales/bags)
- big bags
- pallets (21 profiles=OK, 15 profile=not)
- slaughter waste
- sewage sludge
- compressed bales
- etc.

Even without the special automatic roll-up protection sheet the Cargo Floor can also be used for the trouble-free transport of the following products:

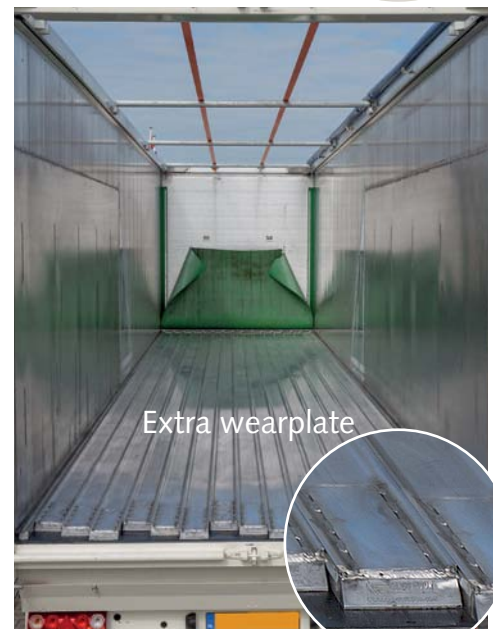
- glass
- gravel
- ore
- sharp sand
- aluminium scrap
- steel scrap
- electric motors

Driving over the floor with a fork-lift truck

In principle all Cargo Floor floors can be driven over by a fork-lift truck; contact your body builder for information about the permitted weights!

Efficiency/output

Efficiency of loading and unloading (packed) cargo is determined mainly by the flatness and the weight distribution of the cargo over the floor area of the Cargo Floor. Uneven weight distribution will reduce efficiency and may even cause the cargo to only move back and forth within the power stroke of the system. Uneven cargo weight distribution can be compensated by using supports to spread the weight evenly across the floor profiles. The system's operating speed can also affect loading and unloading efficiency.



Drive systems and executions

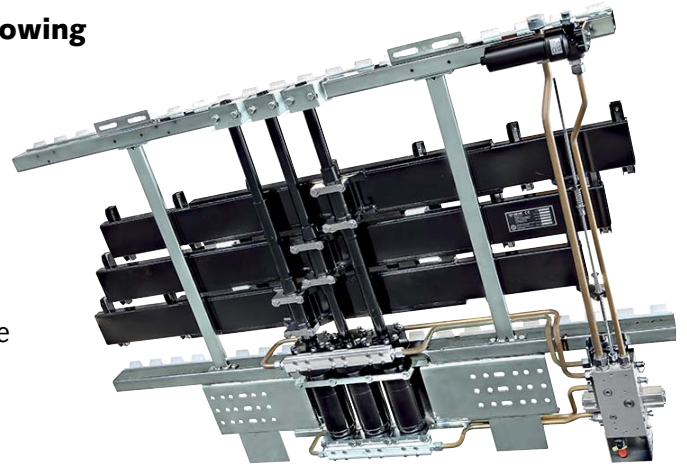
The 8/20 mm. HD profile can be used with the following Cargo Floor drive systems:

- CF500 SL-C Standard & Cargo Bulkmover
- CF800 HD
- CF3 LP-2
- CF100 SL-C "Ultra light"

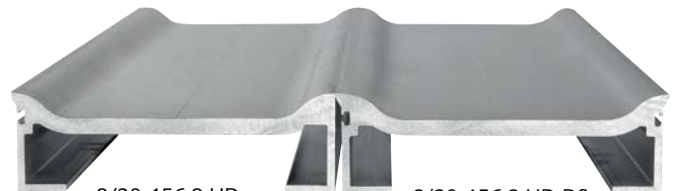
The 8/20 mm. HD profile can be supplied in two widths:

- A) **21 profiles*** 112 mm. for the standard 21 floor profile drive system
- B) **15 profiles*** 156,8 mm. for the 15 floor profile **Cargo Bulkmover** drive system

* Different profile numbers, more or less, are on request possible.




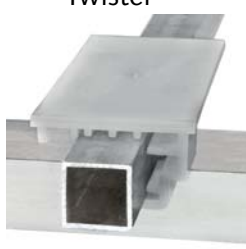

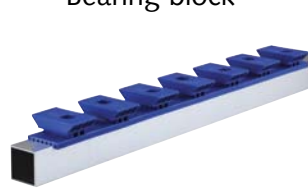
Cargo Roller
(Art. No. 5165003)



8/20-156,8 HD
(Art. No. 79.5208)

8/20-156,8 HD DS
(Art. No. 80.5439)

The 8/20 mm. HD profile can be mounted on the bearings below:

Cargo Bulkmover 15 profiles 156,8 mm.	Standard 21 profiles 112 mm.		
Twister Wide 40/25	Twister	Snap-on	Bearing block
			
tube (alu. or steel) 40x25x2 mm.	tube (alu. or steel) 25x25x2 mm.	special alu. U-profile 25x25 mm.	direct mounting on alu. or steel crossmember



CARGO FLOOR®

HORIZONTAL LOADING-/UNLOADINGSYSTEM

Cargo Floor B.V.

Byte 14
7741 MK COEVORDEN
Holland
Telefoon +31 (0)524-59 39 00
Telefax +31 (0)524-59 39 99
www.cargofloor.com
E-mail: info@cargofloor.com



ISO 9001 - 2008
Certified company

**WORLDWIDE
SERVICE NETWORK**