



Subject : aluminum floor profile

Type : 11/112 (119) mm smooth overlap



**extra protection and sealed by
OVERLAP**



11/112 (119) mm smooth overlap alu. profile

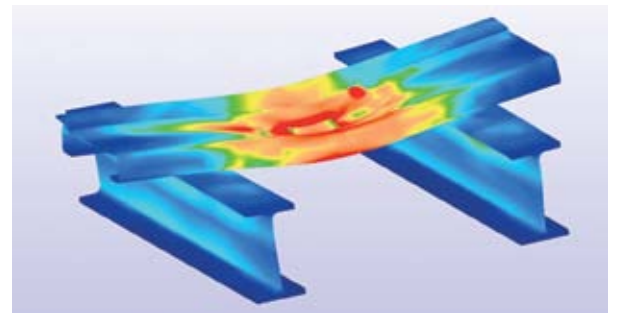
A unique aluminum profile with extra protection and sealed by overlap.

This 11/112 (119) mm smooth overlap alu. profile is especially developed for those applications where no load may leak through between the floor profiles onto the ground. This does not mean that the floor is liquid-tight or will not leak. Also, the standard components are maintained and the profile can be mounted without any structural adjustments to the trailer or Cargo Floor drive system when exchanging a floor.

The weight gain of this overlap profile compared to a 10 mm floor in a trailer is only 85 kg.

Summarising you have the following advantage with the 11/112 (119) mm smooth overlap alu. profile:

- ✓ Exchangeable with existing floors
- ✓ Can be driven over with fork lift truck, 9 ton
- ✓ High wear resistance
- ✓ Extra protected seal
- ✓ High impact resistance
- ✓ No adjustments to vehicle needed
- ✓ Easy mounting
- ✓ Flat floor
- ✓ Suitable for the transport of pallets
- ✓ Longer life span



FEM (finite element method) + 3-D design







Cargo Floor has inhouse engineering for FEM calculations and 3-D designing. Drawings in all file extensions available.



Warning

Incorrect use can result in materials accumulating under the overlap lip, which could cause the profiles to tilt and in the worst case scenario the floor could jam.

APPLICATIONS

multi-functionality	leak proof	clean ability	pallet transport	drive over with a fork lift truck	impact resistance
					

The 11/112 (119) mm smooth overlap alu. profile is suitable for the transport of:

- bulk materials
- wood chips
- sawdust
- bark
- logs of wood
- potting soil
- peat
- clay
- bleaching earth
- straw
- straw bales
- maize
- grain
- potatoes
- carrots
- tapioca
- milk powder
- coffee beans
- soya beans
- alfalfa
- sugar beet and pulp
- chicken feed
- manure
- fertilizer
- salt
- chalk
- coal
- waste paper
- rolls of paper
- aluminum scrap
- domestic waste
- cargo (bales / bags)
- big bags
- pallets
- slaughter waste
- sewage sludge
- compressed bales
- etc.

Driving over the floor with a fork-lift truck

In principle all Cargo Floor floors can be driven over by a fork-lift truck; contact your body builder for information about the permitted weights!

*Efficiency/output

Efficiency of loading and unloading (packed) cargo is determined mainly by the flatness and the even weight distribution of the cargo over the floor area of the Cargo Floor. Uneven weight distribution will reduce efficiency and may even cause the cargo to only move back and forth within the power stroke of the system. Uneven cargo weight distribution can be compensated by using supports to spread the weight evenly across the floor profiles. The system's operating speed can also affect loading and unloading efficiency.



Subdeck and Guidance



CLEAN SHEET



Cargo Roller
part no. 5165003

Floor mat for moving head-board HD extra reinforce rubber
part no. 4199006

APP REMOTE CONTROL



Wireless Cargo App remote control set "plug & play"
part no. 6104008

HEAT PROTECTION



Oil temperature safety switch
part no. 6104024.01

WEIGHT

A complete trailer floor with a length of 13.600 mm, consisting of 21 floor profiles type 11/112 (119) mm, weights 1.120 kg.

PART NO.

11/112 (119) mm smooth overlap alu. floor profile: part no. 67.6315

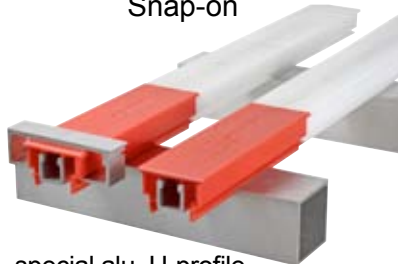
Guidance; the 11/112 (119) mm smooth overlap alu. floor profile can be mounted on the standard 21 profiles Cargo Floor drive unit in combination with following bearings:

Twister



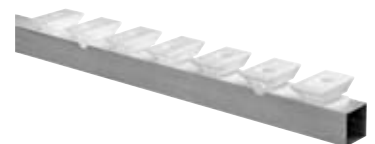
tube (alu. or steel)
25x25x2 mm

Snap-on



special alu. U-profile
25x25 mm

Bearing block



direct mounting on
alu. or steel crossmember



CARGO FLOOR®

HORIZONTAL LOADING-/UNLOADINGSYSTEM

Cargo Floor B.V.

Byte 14
7741 MK COEVORDEN
The Netherlands
Telephone +31 524 593 900

www.cargofloor.com
info@cargofloor.com



**WORLDWIDE
SERVICE NETWORK**