



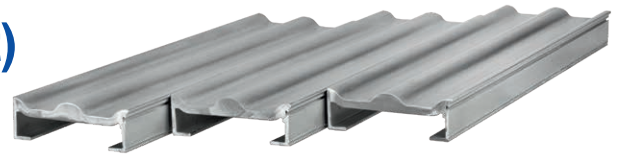
Subject : **Cargo Bulk mover**
Type : **XHDI & XHDI-XD**



X-treme Heavy Duty Impact



XHDI (X-treme Heavy Duty Impact) aluminum profile



This is the ultimate **Heavy Duty** floor profile that is especially developed for the transport of **extreme products** which are very abrasive and this floor profile is able to withstand great impact. It can be very much seen as an excellent - robust - alternative for the steel floor profiles. Because of the lower weight you can carry much more payload compared to other solutions. Therefore this profile is the ultimate solution for the transport of all kinds of bulk materials and waste: among which stones, metal scrap, electro motors and such. Because of the special designed shape the XHDI floor is also very well sealed and leakage will be reduced to a bare minimum.

The XHDI (X-treme Heavy Duty Impact) floor profile has following advantages:

- Efficient and clean unloading;
- Less wear between the floor profiles;
- Optimal protection of the seal;
- X-tremely suitable for abrasive materials;
- Low cost of ownership;
- X-treme high impact resistance;
- Large moving floor surface;
- No wear to the vehicle construction;
- Simple mounting.



A UNIQUE ENGINEERED DESIGN

XHDI aluminum profile; This profile has an extreme high impact resistance and because of the shape and profile thickness extreme wear will not affect it for a very long time. The special design and round shapes makes the XHDI floor almost leak free. The unique design constantly pushes the product away from the seams between the profiles; the product is, so to speak, forced to the middle of the floor profile instead of the seams. Because of this the product does not come into contact with the high-grade seal and the self-greasing high grade UHDPE bearing of the Cargo Floor System, the bearing will remain clean and so no extra wear can arise!

The XHDI profile is suitable for the transport of almost all kinds of basis bulk materials, but next to this is also especially designed for the transport of:

- Domestic waste;
- Materials suitable for recycling;
- Steel scrap;
- Sand;
- Waste containing glass;
- Aluminum scrap;
- Construction and demolition waste;
- Gravel.

Multi employable	Leakproof	Cleanability	Pallet transport only forklift	Drive over with a fork lift truck	Impact resistance

LIGHTWEIGHT (= max. payload)

A complete floor for a trailer with a length of 13.600 mm, consisting of 15 floor profiles of the type 10-22/156,8 mm. XHDI, weighs 1.390 kg. (profile per meter weighs ± 6.97 kg.)

Art. no. 81.5440 standard 810.5440 XD 'hard alloy'

Cargo Bulkmover

Primarily for loose products

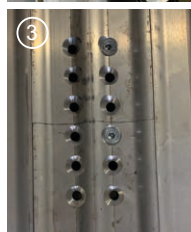
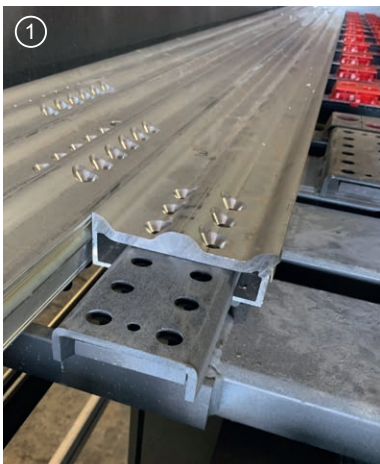
Because the floor profiles of the Cargo Bulkmover are wider than the standard 21 floor profile execution this concept is not suitable for the loading and unloading of pallets and paper reels with the help of the floor movement of the Cargo Floor system. Of course pallets eg. can be loaded - and unloaded - by driving a hand pallet truck or fork lift truck over the floor. More than 20 years of experience with the wide floor profiles, mainly in stationary factory applications, has proven that the 15 profile Bulkmover version of the Cargo Floor system is extremely suitable for the efficient unloading of most common loose products in large volumes.



Special option: XD 'HARD ALLOY'

NEW

The XHDI profile is now also available in special developed 'HARD ALLOY' execution: XD stands for X-treme Durability. The XD option is the ultimate for transport applications which do high frequency loading and unloading as well as the transport of products which have a higher abrasiveness. The XD profiles are almost as wear resistant as steel and the impact resist is better than the standard, it is the alternative for steel floor profiles.



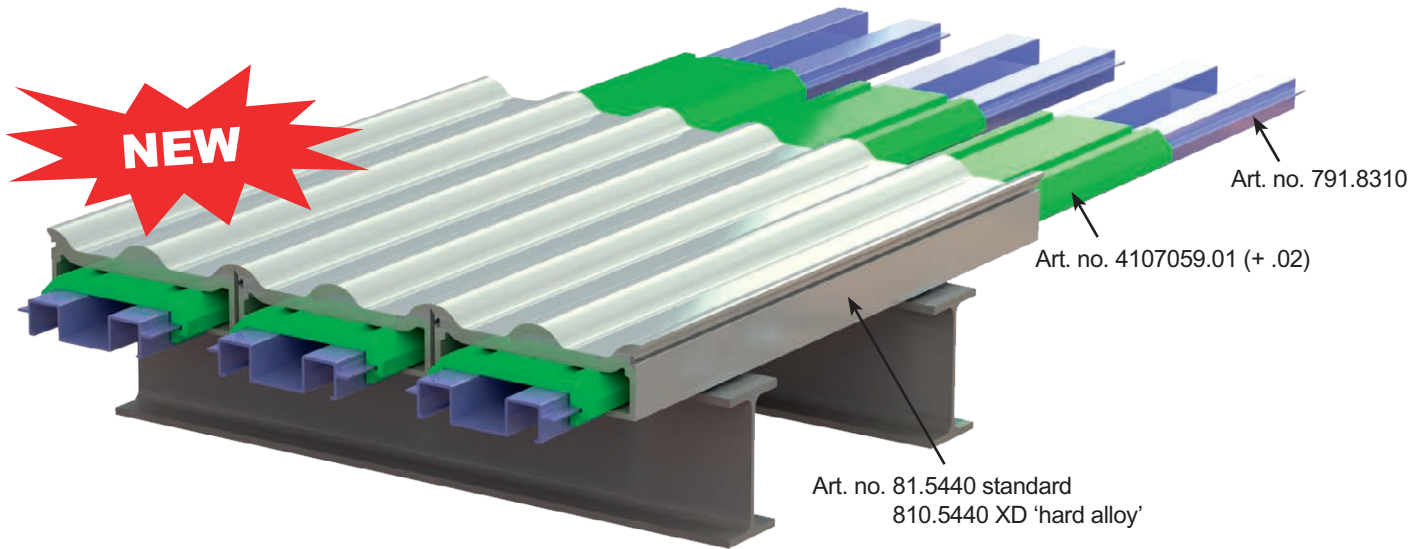
Connecting floor slats at the Cargo Floor drive unit

This very simple solution makes it possible to connect two Cargo Floor aluminum floor profiles together to create a longer floor profile.

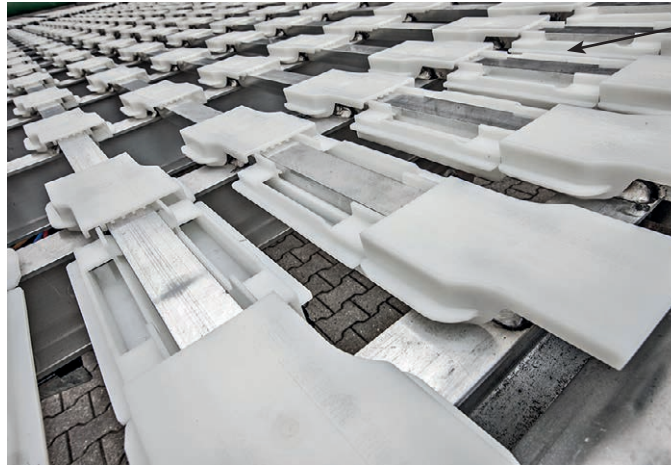
- ✓ No welding required
- ✓ No special bearings required
- ✓ World wide transport of floor profiles in a 20ft or 40ft sea container
- ✓ Save on future repair costs with the Cargo Floor "Slat Connector". You now have the possibility to only replace a part of the floor (for example only the rear end). Costsaving: you don't need to order a full-length floor and less length means less to transport.

Subdeck support, bearings & anti-lifting

A) Solid bearing UHMPE & anti-lifting under the entire floor profiles

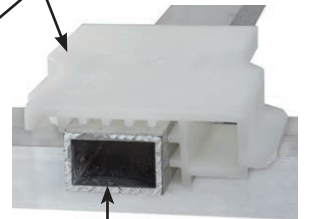


B) Twister wide, easy mounting, subdeck & anti-lifting



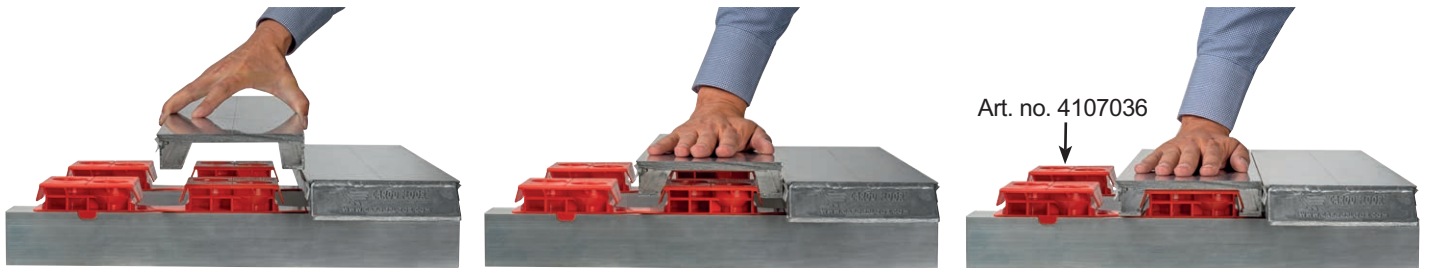
Special bearing wide/
anti-lifting
Art. no. 4107034

Twister Wide 40/25
Art. no. 4107031



Tube (alu./steel) 40x25x2 mm.

C) Plastic bearing comb: no subdeck, top mounting & anti-lifting



Floor mounting; this is normally done by sliding in the floorprofiles. Alternatively it can be clicked in from above without the need of sliding. This is very practical when space is limited.

Remarks

- **Driving over the floor with a fork-lift truck.** In principle all Cargo Floor floors can be driven over by a fork-lift truck; contact your body builder for the permitted weights!
- **Efficiency of loading and unloading** (packed) cargo is determined mainly by the flatness and the even weight distribution of the cargo over the floor area of the Cargo Floor. Uneven cargo weight distribution will reduce efficiency and may even cause the cargo to only move back and forth within the power stroke of the system. Uneven cargo weight distribution can be compensated by using supports to spread the weight evenly across the floor profiles. The system's operating speed can also affect loading and unloading efficiency. Next to a better efficiency and transportation speed a moving headboard cleans the compartment better.



CARGO FLOOR®

HORIZONTAL LOADING-/UNLOADINGSYSTEM

Only Quality generates Quality!™

Cargo Floor B.V.

Byte 14
7741 MK COEVORDEN
The Netherlands

☎ +31 524 593 900
✉ info@cargofloor.com
www.cargofloor.com



Free App!



Remotely control the Cargo Floor with your smartphone
Art. no. 6104008