

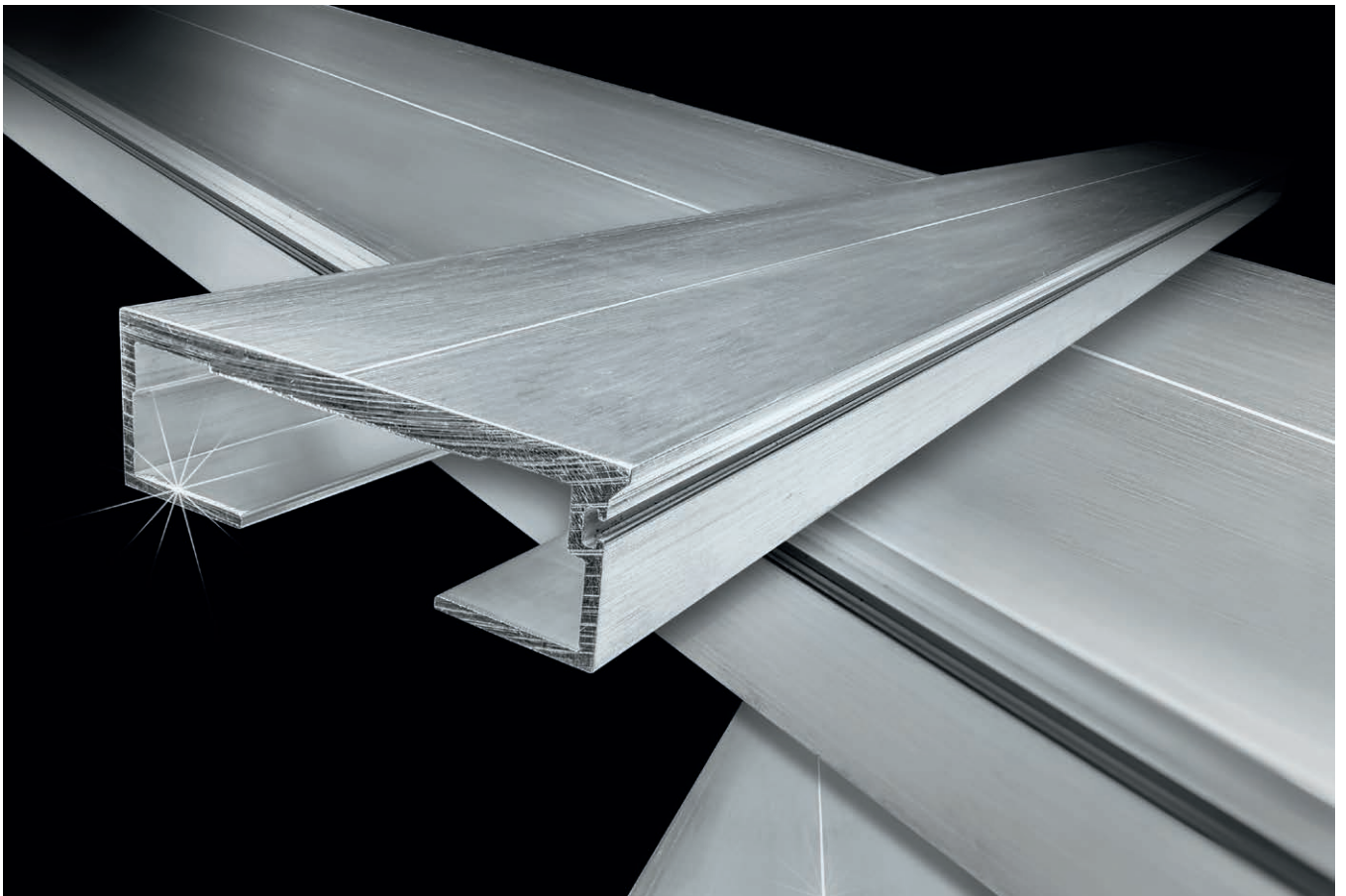


CARGO FLOOR[®]

HORIZONTAL LOADING-/UNLOADINGSYSTEM

Only Quality generates Quality![™]

Subject : 'hard alloy' aluminum floor profile
Type : 7/112 XD 'X-treme Durable'



'hard alloy' aluminum floor profile

X-treme Durable

The lightest alternative for steel!



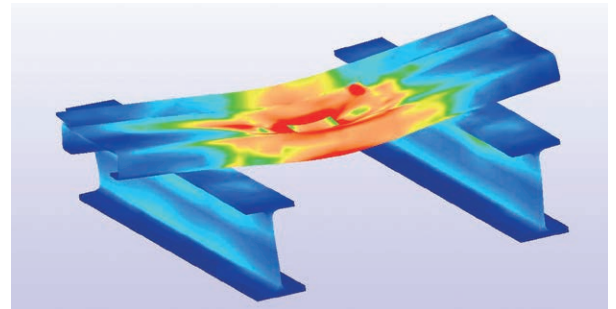
7/112 XD 'X-treme Durable' alu. floor profile

A unique aluminum profile made out of 'hard alloy' X-tremely wear resistant

This unique 7/112 XD 'X-treme Durable' alu. floor profile is made out of a special developed hard alloy for transport applications which do high frequency loading and unloading as well as the transport of products which have a higher abrasiveness. It is also the extreme and high grade alternative for steel floor profiles, especially if multi functionality (pallet transport, flat floor surface, the ability to drive over the floor with a fork lift truck) and weight are of essential importance for you. Furthermore, the standard components are maintained and the XD series can be mounted without any structural adjustments to the trailer or Cargo Floor drive system when replacing an old floor.

Summarizing you have the following advantage with the 'X-treme Durable' floor:

- ✓ X-tremely wear resistant
- ✓ Wear resistance almost equal to steel
- ✓ Lightweight
- ✓ **200kg lighter** than a 10mm floor with better characteristics
- ✓ Only 119kg heavier than a basic 6mm floor
- ✓ Fully flat surface
- ✓ Suitable for the transport of pallets*
- ✓ No adjustments to vehicle needed
- ✓ Can be driven over with a fork lift truck, 8 ton
- ✓ High impact resistance
- ✓ Exchangeable with existing floors
- ✓ Easy mounting
- ✓ Longer life span
- ✓ Higher resale value



FEM (finite element method) + 3-D design




Cargo Floor has inhouse engineering for FEM calculations and 3-D designing. Drawings in all file extensions available.



Driving over the floor with a fork-lift truck

In principle all Cargo Floor floors can be driven over by a fork-lift truck; contact your body builder for information about the permitted weights!

APPLICATIONS

multi-functionality	leak proof	clean ability	pallet transport	drive over with a fork lift truck	impact resistance
					

The 7/112 XD 'X-treme Durable' alu. profile is suitable for the transport of:

- bulk materials
- wood chips
- sawdust
- bark
- logs of wood
- potting soil
- peat
- clay
- bleaching earth
- straw
- straw bales
- maize
- grain
- potatoes
- carrots
- tapioca
- milk powder
- coffee beans
- soya beans
- alfalfa
- sugar beet and pulp
- chicken feed
- manure
- fertilizer
- salt
- chalk
- coal
- waste paper
- rolls of paper
- aluminum scrap
- domestic waste
- cargo (bales / bags)
- big bags
- pallets
- slaughter waste
- sewage sludge
- compressed bales
- etc.

Even without the special automatic roll-up protection sheet the Cargo Floor can also be used for the trouble-free transport of the following products:

- glass
- aluminum scrap
- sharp sand
- electric motors

*Efficiency/output

Efficiency of loading and unloading (packed) cargo is determined mainly by the flatness and the even weight distribution of the cargo over the floor area of the Cargo Floor. Uneven weight distribution will reduce efficiency and may even cause the cargo to only move back and forth within the power stroke of the system. Uneven cargo weight distribution can be compensated by using supports to spread the weight evenly across the floor profiles. The system's operating speed can also affect loading and unloading efficiency.



Subdeck and Guidance



CLEAN SHEET



Cargo Roller
art. no. 5165003



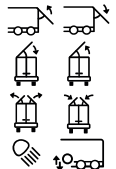
Floor mat for moving head-board HD extra reinforce rubber
art. no. 4199006

APP REMOTE CONTROL

Intelligent Remote Control Module (IRCM) art.no. 6104048



Extension module for Intelligent Remote Control art.no. 6104049



Remote Control
art.no. 6104047



HEAT PROTECTION



Oil temperature safety switch
art. no. 6104024.01

WEIGHT

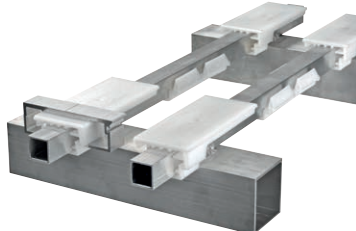
A complete trailer floor with a length of 13.600 mm, consisting of 21 floor profiles type 7/112mm XD (X-treme Durable), weighs only 856 kg.

PART NO.

7/112mm XD (X-treme Durable) floor profile: art. no. 33.5046

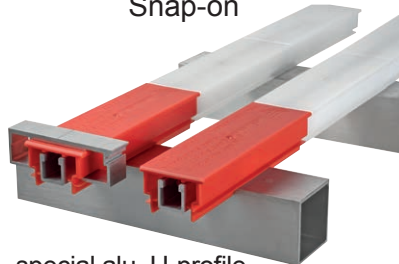
Guidance; the 7/112 XD 'X-treme Durable' alu. floor profile can be mounted on the standard 21 profiles Cargo Floor drive unit in combination with following bearings:

Twister



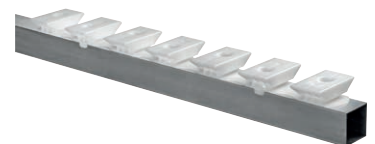
tube (alu. or steel)
25x25x2 mm

Snap-on



special alu. U-profile
25x25 mm

Bearing block



direct mounting on
alu. or steel crossmember



CARGO FLOOR®

HORIZONTAL LOADING-/UNLOADINGSYSTEM

Only Quality generates Quality!™

Cargo Floor B.V.

Byte 14
7741 MK COEVORDEN
The Netherlands
☎ +31 524 593 900
✉ info@cargofloor.com
🌐 cargofloor.com



**WORLDWIDE
SERVICE NETWORK**