



**CARGO FLOOR<sup>®</sup>**

HORIZONTAL LOADING-/UNLOADING SYSTEM



Subject : **ultra light plastic floor**

Type : **9/112 CPL 'Cargo Plastic Light'**



**when every kilo counts!**



# 9/112 CPL 'Cargo Plastic Light'

## Ultra light plastic floor for hauling bulk products

This CPL 'Cargo Plastic Light' floor has been made out of a special high density plastic UHMW, which is extremely wear resistant, very light and impact resistant.

Specially for the applications of this floor, the engineers has designed a unique overlapping lip which avoids the necessity of an extra seal. Thereby it seals itself with the specially formed overlapping lip.

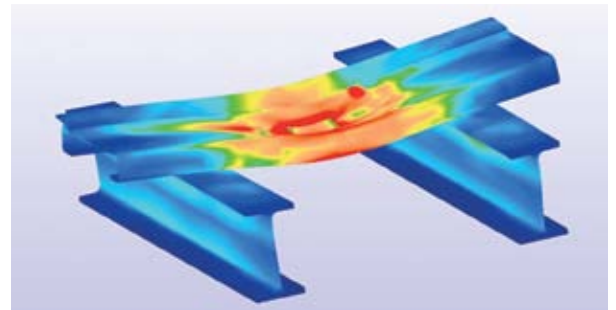
### Applications

This floor is especially suitable for the transport of agricultural products, as well as sawdust and peat. There these floor profiles do not oxidize this floor is also very suitable for the transport of all kinds of fertilizers, like chicken manure, fertilizers, non-ferro, oxidants, etc. (exception: liquid products).

This CPL 'Cargo Plastic Light' floor is only designed for the transport of bulk products with the exception of abrasive hard bulk products. It cannot be driven over with a fork lift truck.

The CPL "Cargo Plastic Light" weights 449 kg for a complete trailer and is therewith 286 kg lighter than the lightest aluminum alternative.

- ✓ Extremely light
- ✓ Very wear resistant
- ✓ Insulating characteristics
- ✓ Clean
- ✓ No oxidation
- ✓ Simple mounting
- ✓ Fully recyclable 









### FEM (finite element method) + 3-D design

Cargo Floor has inhouse engineering for FEM calculations and 3-D designing. Drawings in all file extensions available.



# APPLICATIONS

multi-functionality	leak proof	clean ability	pallet transport	drive over with a fork lift truck	impact resistance
					

## The 9/112 CPL 'Cargo Plastic Light' floor is suitable for the transport of:

- bulk materials
- wood chips
- sawdust
- bark
- logs of wood
- potting soil
- peat
- clay
- straw
- straw bales
- maize
- grain
- potatoes
- carrots
- tapioca
- milk powder
- coffee beans
- soybeans
- alfalfa
- sugar beet and pulp
- poultry feed
- manure
- fertilizer
- salt
- chalk
- used paper
- slaughter waste
- sewage sludge
- etc.

The CPL 'Cargo Plastic Light' floor in combination with the ultimate Cargo Floor drive unit, is the world's lightest moving floor trailer solution ever.

### \*Efficiency/output

Efficiency of loading and unloading (packed) cargo is determined mainly by the flatness and the even weight distribution of the cargo over the floor area of the Cargo Floor. Uneven weight distribution will reduce efficiency and may even cause the cargo to only move back and forth within the power stroke of the system. Uneven cargo weight distribution can be compensated by using supports to spread the weight evenly across the floor profiles. The system's operating speed can also affect loading and unloading efficiency.





# Subdeck and Guidance



## CLEAN SHEET

Cargo Roller  
part no. 5165003



Floor mat for moving headboard HD extra reinforce rubber  
part no. 4199006

## APP REMOTE CONTROL



Wireless Cargo App remote control set "plug & play"  
part no. 6104008

## HEAT PROTECTION



Oil temperature safety switch  
part no. 6104024.01

## **WEIGHT**

A complete trailer floor with a length of 13.600 mm, consisting of 21 floor profiles type 9/112 CPL, weighs only 449 kg.

## **PART NO.**

9/112 CPL 'Cargo Plastic Light' floor profile: part no. 85.2185.

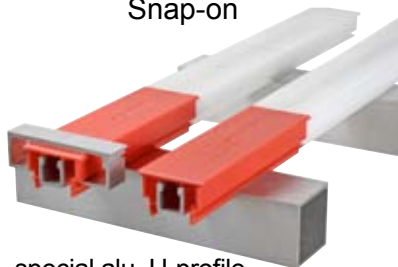
**Guidance;** the 9/112 CPL 'Cargo Plastic Light' floor profile can be mounted the standard 21 profiles Cargo Floor drive unit in combination with following bearings:

Twister



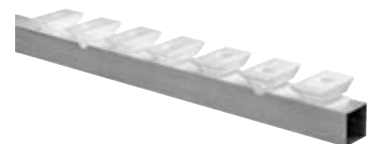
tube (alu. or steel)  
25x25x2 mm.

Snap-on



special alu. U-profile  
25x25 mm.

Bearing block



direct mounting on  
alu. or steel crossmember



# CARGO FLOOR®

HORIZONTAL LOADING-/UNLOADINGSYSTEM

**Cargo Floor B.V.**

Byte 14  
7741 MK COEVORDEN  
The Netherlands  
Telephone +31 524 593 900

www.cargofloor.com  
info@cargofloor.com



**WORLDWIDE  
SERVICE NETWORK**