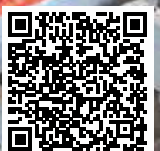




HORIZONTAL LOADING-/UNLOADINGSYSTEM

We Move It All!

MOVING FLOOR STATIC INDUSTRIAL SOLUTIONS



The ultimate Cargo Floor® moving floor transport-/dosing system



Moving Floor

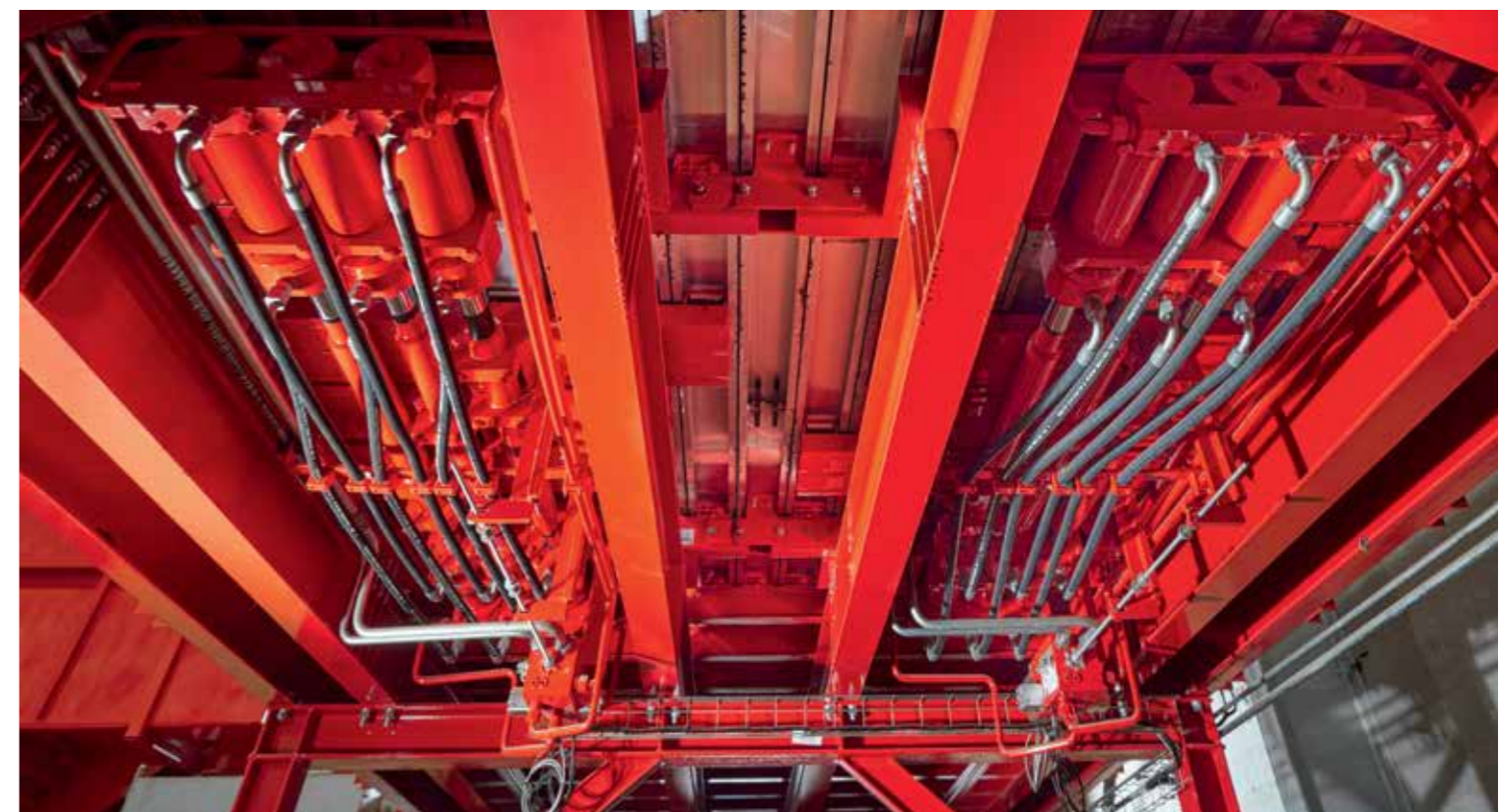
Cargo Floor is the global leader in multifunctional horizontal (un)loading systems. The Cargo Floor system is based on a “work smarter, not harder” principle designed to facilitate fast, safe, and efficient transport through floor movement. Rather than burdensome, time-consuming, and sometimes dangerous “lift-and-carry” methods, Cargo Floor technology enables the contents of every trailer to be loaded and unloaded in a matter of minutes by moving the trailer floor under the product. The system allows for a wide variety of bulk materials and other goods to be effortlessly transported, including pallets, bales, and even paper reels! The enormous success of Cargo Floor’s hydraulic-operated drive units is based on a simple and easy to install system that is generally suitable for all types of trailers, equipment, and freight. Cargo Floor’s standard system (CF500) can handle most transport applications, however, Cargo Floor designers and engineers have vast experience crafting all manner of dedicated applications for specialized or unique transport needs.

Development

Cargo Floor prides itself on its extensive field experience (>30 years) collaborating with OEM engineers to craft and manufacture the best possible (un)loading systems. Cargo Floor technology relies on this experience as well as market feedback from transport companies, material handling experts, logistic managers, and its customers to ensure that Cargo Floor is always in a position to develop the most reliable, strongest, and most durable system for every application, while still being lightest moving floor system in the world! By using the very latest technology and state of the art components, Cargo Floor strives to be the most innovative manufacturer and supplier of moving floor systems on the planet. All Cargo Floor drive units are powered by hydraulics, mechanically driven by internal valves in order to prevent atmospheric and external conditions (like dust, dirt, or grime) from impacting each system’s operation and performance.

Value

Cargo Floor systems are not only designed to move product faster, safer, and smarter, but also cheaper than more conventional options. Countless factors must be considered to cost-effectively and efficiently transport goods and materials in the modern economy. Cargo Floor systems provide substantial benefits over conventional (un)loading methods by capitalizing on new efficiencies across all major factors, including maximum volume, lower tare weight, lower operational cost (maintenance free), durability, sustainability, as well as human safety and environmental friendliness. The Cargo Floor drive units are designed to meet all of these requirements and more in order to achieve a timely and favorable return on any capital investment.



The Cargo Floor moving floor principle; “how it works”

The Cargo Floor ‘moving floor’ System is a horizontal unloading system for the fast and efficient transport of almost any product. The system is ideal for discharging a wide variety of bulk products, which typically are loaded from above and unloaded horizontally from the rear by the Cargo Floor ‘moving floor’ System. Cargo Floor has also a drivable solution on which the truck trailer combination drives on the floor to unload the product on the static Cargo Floor. The principle works in two directions, in other words the Cargo Floor ‘moving floor’ System can be used to DISCHARGE and when necessary retract the product to avoid accumulation at the auger or rotating scraper.

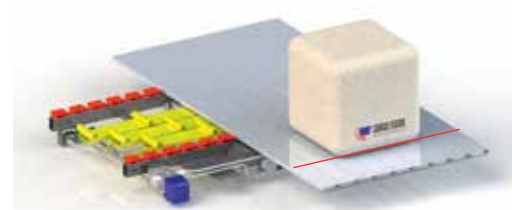
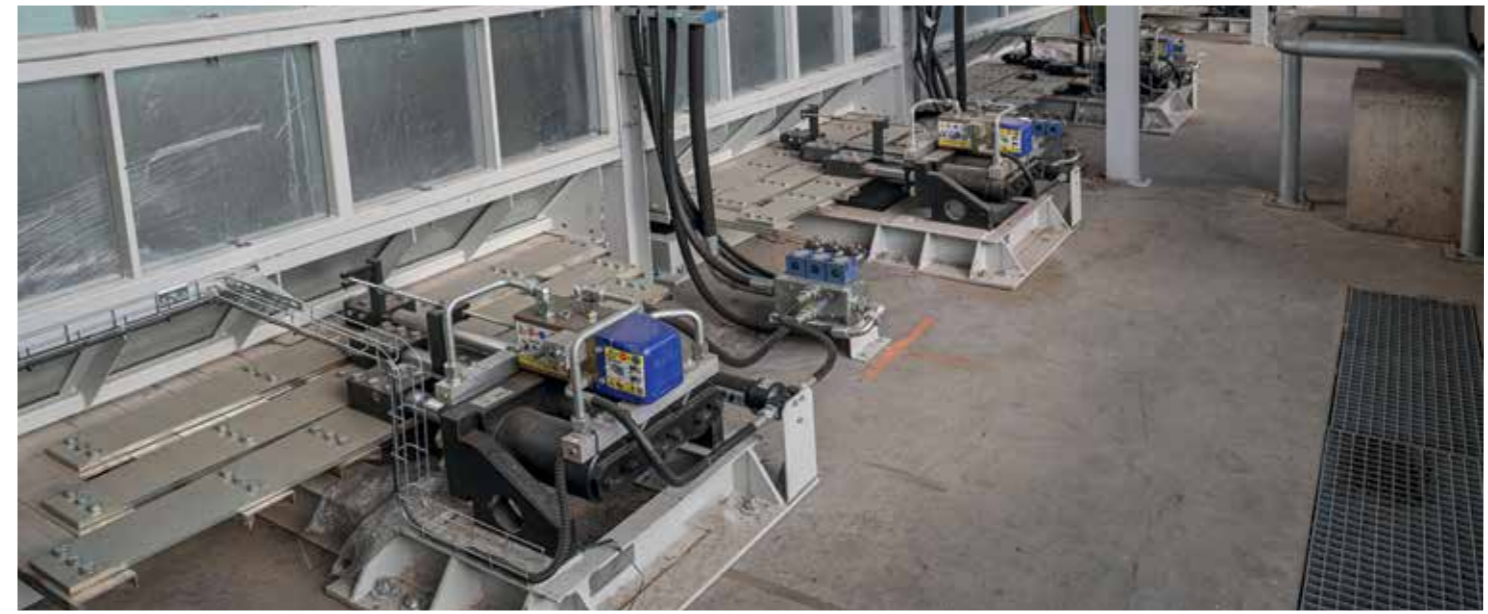
Floor structure

The Cargo Floor ‘moving floor’ System is composed of floor profiles installed lengthwise, parallel to each other. The Cargo Floor drive system moves the floor profiles back and forth within the power stroke of the three hydraulic cylinders. The floor profiles are made primarily from ALUMINUM, however they can also be supplied in high tensile STEEL or even in PLASTIC. The space between the floor profiles is sealed and ensured by a high-quality plastic seal to avoid leakage; also SEALLESS, LEAK RESIST, Semi Leak Proof floors and even 100% LEAK PROOF solutions are available.

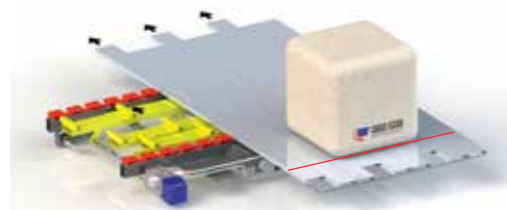
Transportation speed (theoretical):

0-4,8 meter/min, this depends on the determined pump flow (variable pump flows are possible) and the efficiency between the floor and product.

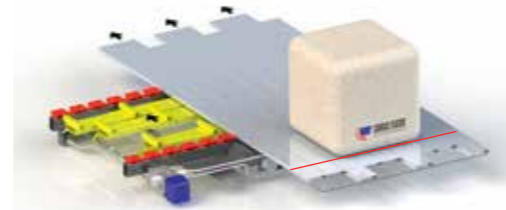
Excellent dosage and almost continuous movement possible!



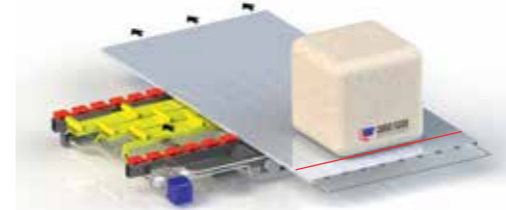
Step 1: all three hydraulic cylinders move the entire floor in the selected direction, thereby moving the product.



Step 2: the first hydraulic cylinder retracts only 1/3 of the floor in the opposite direction, the product does not move.



Step 3: the second hydraulic cylinder retracts the next 1/3 of the floor in the opposite direction, the product does not move.



Step 4: the third hydraulic cylinder retracts the last 1/3 of the floor in the opposite direction, the product does not move.



Step 1 is repeated again. The speed at which these steps are repeated can be variable adjusted depending on the of the hydraulic oil flow.

Video









Effortless and precise

The Cargo Floor moving floor system stands as a beacon of efficiency, reliability, and cost-effectiveness. Tailored for use in dosing bunkers, it effortlessly stores and precisely dispenses bulk materials, serving as the backbone of processes where bulk material has to be transported and dosed for operations worldwide.

Sustainable energy production

With a proven track record spanning decades, the Cargo Floor system has showcased its versatility across various sectors, including alternative fuels (RDF) for the cement industry, biomass for incineration plants and the biogas industry. Its strength lies in its ability to store large volumes and seamlessly dispense them without the need for rotating parts.

What sets this system apart is its capability to minimize operational costs and downtime. With its robust design and simple maintenance, the Cargo Floor system proves to be a dependable ally in any environment.

Reliable

The Cargo Floor moving floor bunkers deliver a consistent performance without compromise. With its efficiency, immense strength, and proven reliability, the Cargo Floor moving floor system has become an indispensable component of modern stationary applications contributing to a sustainable world.







Drivable
 Drivable with a fully loaded truck and loader, the product can be discharged directly on the Cargo Floor which is mounted on the concrete floor surface with a height of only 4 cm. This means no extra handling (transferring) of the product is required, the product is stored and can automatically be feeding into the process.



Agricultural transfer solutions



Turn key solutions



Simple and effective



Trusted solutions, proven in the following industries



Do you have a different product? We have the solution for you!

Distinctive features yield rapid ROI



Flooring profiles in aluminum, steel and plastic

Our stationary Cargo Floor systems offer versatile solutions for various applications, featuring a range of profiles crafted from aluminum, steel and even in a special plastic: UHMWPE. From standard smooth profiles to intricately designed overlapping profiles, we cater to diverse needs. Discover the reliability and adaptability of Cargo Floor's stationary systems, tailored to meet your specific requirements.

Smooth flooring

The smooth profiles offer unparalleled ease of cleaning and exceptional vehicle overdrivability. With a completely smooth surface, they are effortlessly cleanable and provide excellent manoeuvrability for vehicles. The ingenious seal between the profiles ensures a tight seal, the perfect combination of functionality and efficiency with our smooth profiles, ideal for a wide range of applications.



HD-flooring

The HD profile distinguished by its unique barrel shape, excels in pushing away fine materials from the seams. The material flows back into the barrel shape, so moisture, mud and dust can simply be drained to the outside and almost no leakage through the floor occurs. Widely utilized in stationary bunkers, it proves its efficiency across a multitude of applications.



Protected-Seal flooring

For environments where material containment is paramount, our Protected Seal profile offers unparalleled sealing integrity. Its innovative design shields the seal between profiles, making it ideal for transporting dust-containing products like RDF or sawdust.



Double Nock flooring

In the demanding waste industry, our robust Double Nock profile rises to the challenge. Engineered for extreme applications, especially in the XD 'X-treme Durable' configuration made out of Hard Alloy which has enhanced wear resistance, so these profiles can withstand high impacts and abrasives. They are commonly deployed to continuously feed household waste into shredders.



Wheels of terror!



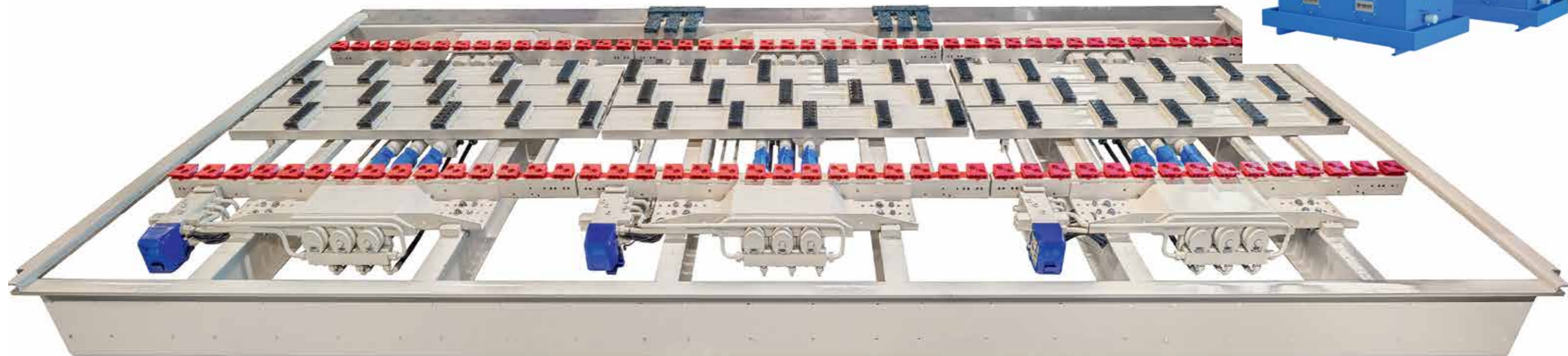
Technical specs



Type	CF500 SLC (Power Speed)*	CF600 HDC	CF350 CD 'Container Drive'	CF3LP-Speedster	CF800 HD-6 cyl.	
	Metric	Metric	metric	metric	Metric	
Weight (from)	kg	450	538	455	382	1038
Available in Cargo Bulkover execution	yes	(yes)*	yes	yes	N/A	yes
Operating possibilities	E/B/A	(B/A)*	E/B/A	E/B/A	B/A	E/B/A
Cylinder bore	mm	100	120	100	110	100
Piston rod diameter	mm	45	45	45	56	50
Working stroke	mm	200	200	200	150	200
Cylinder volume	ltr	2,82	4,2	2,82	2,48	5,3
Oil volume per cycle	ltr	8,45	12,6	8,45	7,45	16
Working pressure	bar	170	130	130	180	170
Max. pressure	bar	225	170	170	200	225
Advised oil flow per minute	ltr	110 (180)*	130	110	110	110
Max. oil flow per minute	ltr	130 (200)*	160	130	130	130
Pressure filter	µm	10 (2x10)*	10	10	10	10
Speed at advised oil flow per minute	mtr	2,6 (4)*	2,1	2,6	2,2	1,4
Speed at max oil flow per minute	mtr	3,1 (4,7)*	2,6	3,1	2,6	1,6
Theoretical unloading time trailer 13.6mtr/45 ft	min	6 (3)*	7	6	5,5	12
Max. loading capacity	ton	40	50	33	35	80
Advised pump capacity (2-line system):						
Flow per minute	ltr	110 (180)*	110	110	130	110
Pressure	bar	250	200	250	225	250
Pressure piping diameter	mm	20x2 (25x2)*	25x2	20x2	20x2	20x2
Return piping diameter	mm	25x2 (30x2)*	30x2	25x2	25x2	25x2
Oil tank filling at advised flow	ltr	110 (180)*	100	110	30	100
Oil tank filling at max. flow	ltr	130 (200)*	130	130	130	130
Max. oil temperature	°C	100	100	100	100	100

Oil types: mineral and biological (HEES); Ambient temperature ranges: ● ISO VG32 (-15 < 30 °C) ● ISO VG46 (15 < 40 °C) ● ISO VG22 (-25 < -15 °C)

Modularly expandable



About Cargo Floor

Global leading manufacturer

Cargo Floor is the global leading manufacturer of horizontal (un)loading **Moving Floor** systems. With over 30 years of experience in the industry, Cargo Floor delivers excellent quality with the very highest levels of customer service and support. **Globally recognized as a market leader**, our products are made in an ISO 9001-2015 certified manufacturing plant. Before delivery, every moving floor system is rigorously tested for function, size, and sealing to ensure that each product is easy to install by its customers and functions as designed. Cargo Floor is proudly made in the Netherlands and exported all over the world.



Innovative

We pride ourselves on our experience, working with OEMs to design and build the best possible (un)loading systems. Combining this experience with feedback from transport companies, material handling experts, and logistic managers ensures we can develop the most reliable, strongest, and most durable system for every application, while still being the lightest moving floor system available. We strive to be the most innovative manufacturer and supplier of moving floor systems on the planet by using the very latest technology and state of the art components. All Cargo Floor drive units are powered by hydraulics and mechanically driven by internal valves to prevent contaminants like dust dirt and grime from impacting performance.



Sustainability

Everything starts with an idea.

An idea for improving and evolving the world we live in. Studying everything to perfection, because only quality generates quality. We aim to obtain maximum efficiency simply and sustainably to build a better future for the next generations. We want to share our ideas with the rest of the world, Showing that “quality” and “sustainability” are two concepts that can coexist. Our idea is to protect both men and the environment, reducing risks and making the most out of what our planet gives us. We want to move beyond our borders, drawing a new path for the future. But the future is closer than you think...

Cargo Floor, your future is in our world.



Cargo Floor B.V. has specialised in the following product groups:

- **Cargo Floor mobile**

Hydraulic moving floor systems for the transport of all kinds bulk material.

- **CargoMatic “The Logistic Solution”**

A dock-to-trailer conveyor system for quick, safe and fully automatically loading / unloading of all packed materials.

- **Cargo Floor stationary**

Hydraulic moving floor systems for self-unloading transport/dosing systems in factories (engineering, design, advice).

- **Service and installation**



Cargo Floor B.V.
 Byte 14
 7741 MK COEVORDEN
 The Netherlands
 ☎ +31 524 593 900

Cargo Floor USA, Inc.
 Texarkana
 Texas
 USA



WORLDWIDE SERVICE NETWORK

✉ info@cargo-floor.com

🌐 cargo-floor.com

The information in this brochure is for information purposes only, no rights can be derived from the content thereof. Copyright April 2024. Cargo Floor® and Moving Floor® are registered trademarks of Cargo Mac B.V.